



ANTICANCER EFFECT OF *SAPINDUS TRIFOLIATUS* ON HUMAN BREAST CANCER CELL LINES

D. Pradhan, V.Joshi and G.Tripathy*

University Department of Pharmaceutical Sciences, Utkal University, Vanivihar, Bhubaneswar, India.

*Corresponding author deba_udps@yahoo.co.in

ABSTRACT

Evaluation of anticancer effect of *Sapindus trifoliatus* (family- Sapindaceae) which has long been prescribed for various infectious and malignant diseases. Bio-assays of extracts from *Sapindus trifoliatus* showed that a fraction (fraction 3) from an ethanolic extract had an antiproliferative effect on SKBR3 and MDA-MB435 human breast cancer cells. The ED₅₀ value of *Sapindus trifoliatus*, fraction 3 was 56.07 and 30.61 µg/ml for SKBR3 and MDA-MB435, respectively. After 48 h of exposure, this fraction at a concentration of 100 µg/ml significantly reduced cell proliferation in both cancer cells. In MDA-MB435 cells, cell cycle analysis showed that the herb extract fraction 3 induced the accumulation of cells in G2/M phase, whereas no significant change in cell cycle was detected in SKBR3 cells. The results indicated that the extract fraction could induce cell cycle arrest in some way. However, further investigation is needed to assess the molecular mechanisms mediated anticancer activities of this plant.

KEYWORDS

Anticancer; SKBR3, MDA-MB435, *Sapindus trifoliatus* and G2/M arrest.

INTRODUCTION

Breast cancer is one of the most prevalent malignancies in women in many countries worldwide. In India, breast cancer is the second in frequency after cervical cancer, with an estimated incidence rate of 17.2 per 100,000 which has increased in all parts of the country during the past decade¹⁰. Though the breast cancer therapy which is usually multimodality treatment is in advance, cytotoxic drugs still play the important roles for the increasing survival rate together with good quality of life⁵. Therefore, the development and search for

novel and effective anticancer agents have become very important issues³ (D. Cameron and R. Bell *et al*, 2004). To date, many cytotoxic agents including natural products isolated from plant sources have been investigated for the discovery of the potential novel anticancer drugs⁴. Higher plants have long been shown to be excellent and reliable sources for the development of novel anticancer drugs. In India, many plants have been used for treatment of various malignancies over centuries. *Sapindus trifoliatus* (Family: Sapindaceae) is an India traditional herbal medicine that has long been used for many decades to relieve symptoms from fever caused by infection, inflammation and prescribed in the mixture of



ANTICANCER EFFECT OF *SAPINDUS TRIFOLIATUS* ON HUMAN BREAST CANCER CELL LINES

traditional medicine for treating of various malignancies¹². The plant is locally known as ritha. It also called as soap nut tree. The plant has been reported for its high content of saponin and sugars. The saponin moiety is characterized as the hederagenin group of glycosides¹. The pericarp of the fruit of this plant is reported for its various medicinal properties like tonic, stomachic, spermicidal, and also used in the treatment of hemicranias, migraine, hysteria etc.^{1,2}. However, the property of this plant, especially its anticancer activity, has not yet been investigated. Therefore, this prompted us to investigate the inhibitory growth effect of this plant on two different breast cancer cell lines, SKBR3 and MDA-MB435.

MATERIALS AND METHODS

Plant material and extraction procedures

Sapindus trifoliatus was collected from forest division; Bhubaneswar hill area situated in the eastern part of India, and was identified by Dr S.K.Sahu, a taxonomist at the Utkal University, Vanivihar, Orissa. A voucher specimen No.161 was deposited at the same place. The fruits of this plant were cut into small pieces and ground into powder. The powder (1.5 kg) was macerated three times with 15 litres of 95% ethanol for 7 days each². The extracts were concentrated under reduced pressure resulting in 80.50 g extract (DER = 25.5:1).

The ethanol extract was chromatographed on an Diaion[®] HP-20 column (Mitsubishi Chemical Corp., Japan), an ion-exchange resins open column, for total volume of 15 ml which was dry packed using the glass column (inner diameter 4 cm, 60 cm long) and equilibrated with water (100 ml). The ethanol extract (35 g) was dissolved in distilled water (100 ml) and sonicated for 15 min in an ultrasonic bath. The suspension was centrifuged at 20,000 rpm (about 42,000 × g) for 30 min. The supernatant was applied onto the Diaion[®] HP-20 column, and the eluent was collected to get the water soluble fraction (fraction 1). The precipitate was dissolved in ethanol-water (1:1/100 ml) and ethanol (150 ml) to get the fractions 2 and 3, respectively. Each supernatant was repeatedly performed as described above. The precipitate was dissolved in ethyl acetate to get fraction 4. The chemical composition of each fraction was monitored on TLC. The fractions were on to silica gel GF₂₅₄ Alufolien (Merck) and developed with a chloroform/ethanol (90:10, v/v). The phytosteryl glucoside was used as reference. After developing, the TLC was sprayed with anisaldehyde-sulfuric acid and heated in an oven at 100 °C for 1–2 min. The ethanol fraction revealed eight bands. Three bands were yellow-orange with R_f values of 0.12, 0.25 and 0.30. Five bands were violet-blue with R_f values of 0.17, 0.38, 0.41, 0.56 and 0.61. The violet-blue reference compound appeared at the R_f value of 0.17. A diagram of the extraction process is illustrated in Fig 1.

ANTICANCER EFFECT OF *SAPINDUS TRIFOLIATUS* ON HUMAN BREAST CANCER CELL LINES

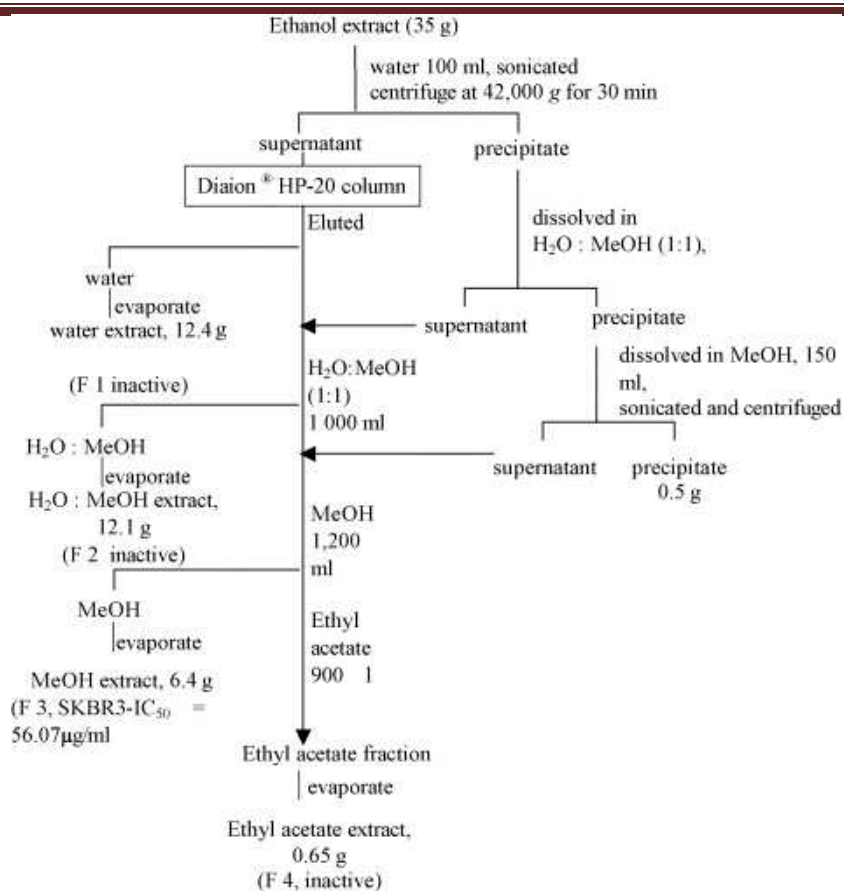


Fig. 1. Bioactivity guided fractionation on Diaion® HP-20 column chromatography of the ethanolic extract.

Preparation of *Sapindus trifoliatus* fruit extracts

All *Sapindus trifoliatus* fruit extracts were dissolved in dimethyl sulfoxide (DMSO, Sigma, St. Louis, USA) except for the water fraction (fraction 1) which was dissolved in water. For all experiments, final concentrations of the tested compounds were prepared by diluting the stock with the culture medium.

Cell lines and culture

Human breast cancer cell lines, SKBR3 (ATCC No. HTB-30) and MDA-MB435 (ATCC No. HTB-129), were kindly provided by Chittaranjan Cancer Institute, Kolkatta. SKBR-3 is human breast cancer cell line with over-expression of HER2/*neu* receptor, absence of ER receptor whereas MDA-MB435 breast cancer cell line is absent ER receptor and also HER2/*neu* expression⁸.



ANTICANCER EFFECT OF *SAPINDUS TRIFOLIATUS* ON HUMAN BREAST CANCER CELL LINES

Cells were cultured in DMEM (Promo Cell, Germany) supplemented with 10% heat-inactivated fetal bovine serum (Promo Cell, Germany) and 1% Penicillin-streptomycin (PromoCell, Germany). The cells were incubated at 37 °C in a humidified atmosphere with 5% CO₂.

Cell proliferation assay

A total of 1×10^4 cells/well was seeded in a 96-well plate. After 24 h of incubation, various concentrations of herb extracts were added to the wells to get the final concentration of 1, 10, 100 and 500 µg/ml. Control groups were added with DMSO to get the final concentration of 1%. Doxorubicin was used as positive control. Then cells were incubated for an additional 48 h. After 2 days, 50 µl of MTT[3-(4,5-dimethylthiazol-2-yl)-2,5-diphenyl tetrazolium bromide] (Sigma) 1 mg/ml in phosphate buffer saline (PBS) was added to each well and incubated for 4 h at 37 °C. The medium was removed and formazan was dissolved in DMSO and the optical density was measured at 590 nm using a Bio-assay reader (Biorad, USA)¹³.

Cell viability assay

Cells were seeded in a 96-well plate at the same concentration as the cell proliferation assay and incubated for 24 h at 37 °C with 5% CO₂. Various concentrations of herb extracts as indicated were added to each well including DMSO as control groups. After 48-h incubation, cells were trypsinized and viable cell counting was performed by enumerating cells which excluded trypan blue dye using a hemocytometer.

Cell cycle analysis

To determine the cell cycle, 1×10^6 cells were seeded in each tissue culture dish and treated

with herb extracts at a final concentration of 80 and 160 µg/ml for SKBR3. For MDA-MB435, cells were treated with herb extracts at a final concentration of 60 and 120 µg/ml. 1% DMSO was added to the control group. After treatment for 48 h, cells were collected and incubated with reagents as described in the protocol of the CycleTEST™PLUS DNA reagent kit (Becton Dickinson Immunocytometry System). The DNA content of cells was measured by flow cytometry⁹. All samples were analysed within 3 h by FACS carlibur using Cell Quest software.

Statistical analysis

The experiments were performed in triplicate. The data regarding cell proliferation and viability assay were expressed as means ± standard deviation. The values of ED₅₀ were calculated by using R^2 equation. A *P* value less than 0.05 were considered significant.

RESULT & DISCUSSION

The percentage of growth inhibition of the herb extract on human breast cancer cells is shown in Fig. 2A and B. Herb extracts from fractions 1 to 4 and also the crude extract (ethanolic extract) were used to determine the ED₅₀ value (50% inhibition of cancer cell growth) in two different breast cancer cell lines, SKBR3 and MDA-MB435, with a final concentration ranging from 1 to 500 µg/ml. At 48 h, the ED₅₀ values of fraction 3 were 56.07 ± 3.77 and 30.61 ± 1.49 µg/ml for SKBR3 and MDA-MB435, respectively. As fraction 3 was found to have an inhibitory growth effect on these cell lines, this fraction was used to investigate the further effects of this plant on these cells.

ANTICANCER EFFECT OF *SAPINDUS TRIFOLIATUS* ON HUMAN BREAST CANCER CELL LINES

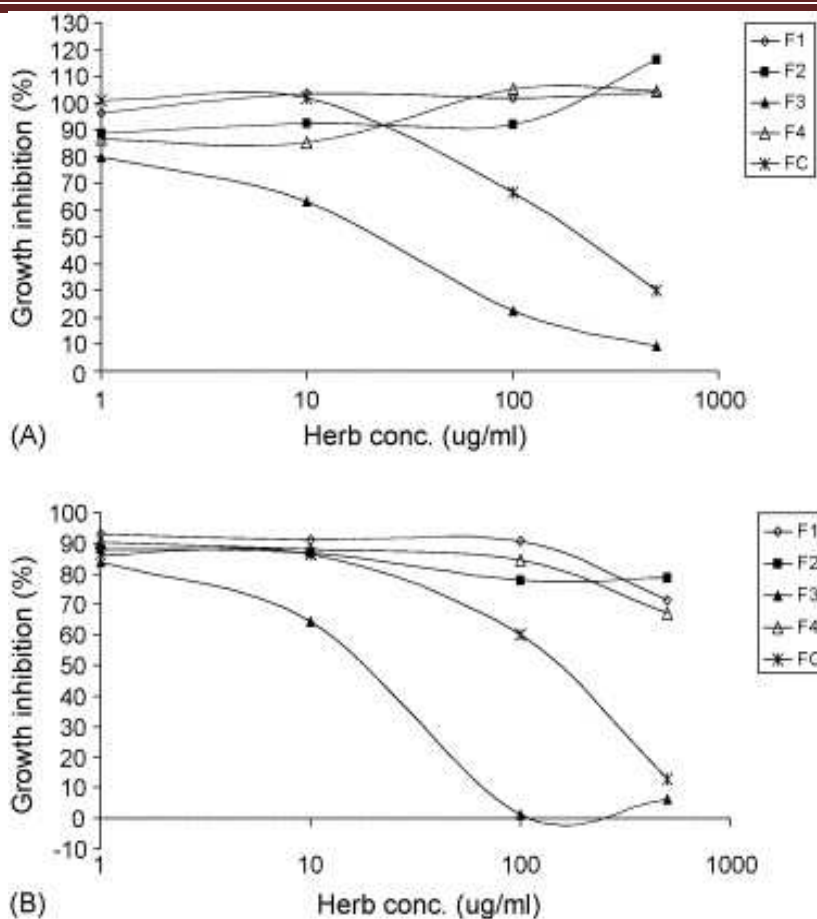


Fig. 2.

Inhibitory growth effect of *Sapindus trifoliatus*. Ethanolic extract on SKBR3 (A) and MDA-MB435 (B) breast cancer cell lines.

Each cell line was treated with herb extracts, fractions 1–4 (F1–4) including the crude extract (Fc), at different concentrations of 1, 10, 100, and 500 µg/ml for 48 h and the growth inhibition was determined using the MTT assay. The growth inhibition was calculated as the percentage of inhibition compared with that of the control.

Effect of extract on cell viability

We also characterized the cytotoxic effect of *Sapindus trifoliatus* on SKBR3 and MDA-MB435 by conducting a cell viability assay stained with trypan blue. The culture of these two breast cancer cell lines was treated with herb extract fraction 3 at final concentrations of 1, 10, 100 and 500 µg/ml for 48 h. The results indicated that at a concentration of 100 µg/ml. Both cell lines showed low viability of less than 50% as compared to that of the control group. No cell inhibition was observed at 10 µg/ml.

ANTICANCER EFFECT OF *SAPINDUS TRIFOLIATUS* ON HUMAN BREAST CANCER CELL LINES

Cell cycle induced by extract

The effect of the herb extract on cell cycle progression on SKBR3 and MDA-MB435 was determined by flow cytometry. SKBR3 treated with herb extract fraction 3 at final concentrations of 160 µg/ml, as shown in Fig. 3A and B, showed

slightly S phase block by decreasing the population of the S phase from 12.89% to 7.19%. For MDA-MB435 cell cycle progression, the result showed that the treated MDA-MB435 cells at concentration of 120 µg/ml. increased the population of the G2/M phase from 24.41% to 45.65% compared with that of the control groups (Fig. 4A and B).

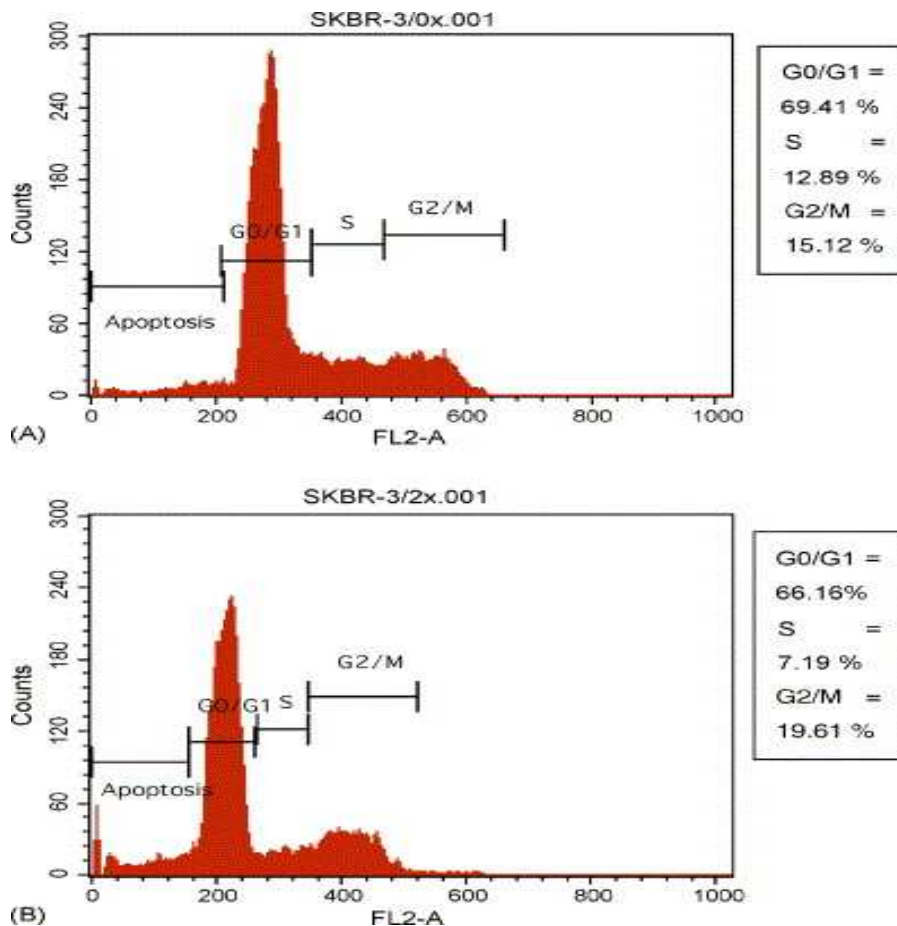


Fig. 3. Inhibition of cell cycle progression in breast cancer cell lines analysed by flow cytometry. (A) Cell cycle analysis of SKBR3 cells without the herb extract at 48 h. (B) Cell cycle analysis of SKBR3 cells after treatment with herb extract fraction 3 for 48 h at 160 µg/ml.

ANTICANCER EFFECT OF *SAPINDUS TRIFOLIATUS* ON HUMAN BREAST
CANCER CELL LINES

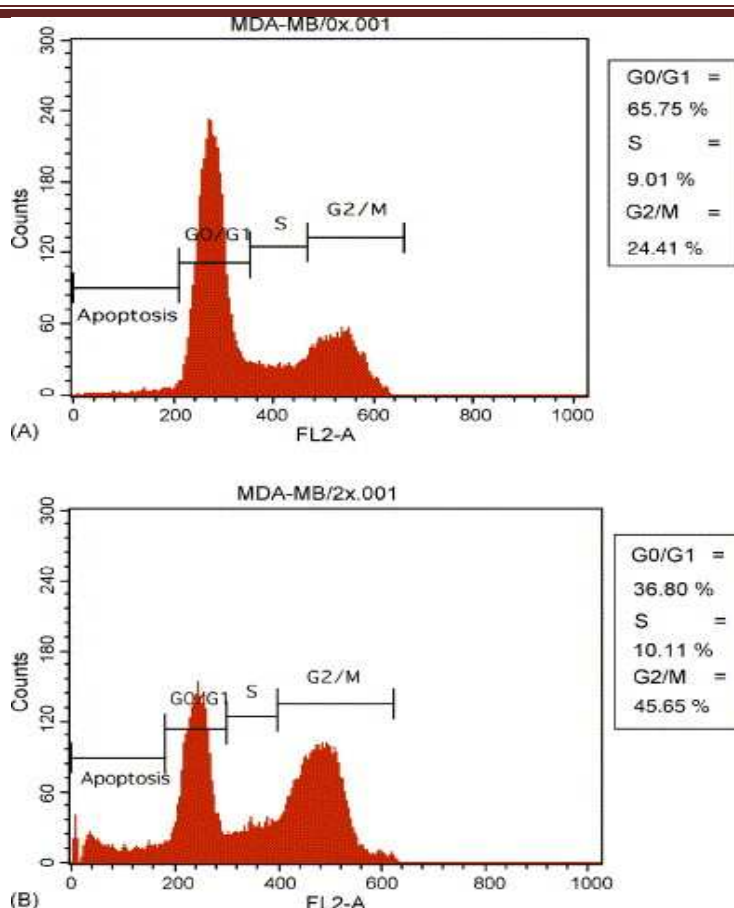


Fig. 4. (A) Cell cycle analysis of MDA-MB435 cells without treatment with the herb extract. (B) Cell cycle analysis of MDA-MB435 cells following treatment with the herb extract fraction 3 at 120 µg/ml for 48 h.

CONCLUSION

The plant ethanolic extract was fractionated on Diaion® HP-20 column chromatography, according to the compound polarity. The eluting solvents were transferred to the column, starting from water, water-ethanol (1:1), ethanol and ethyl acetate. They were subjected to the MTT test for antiproliferative activities. The water soluble fraction comprised the most polar compounds, i.e. inorganic

salts, sugars, amino acids, saponins, the water-ethanol soluble fraction contained the glycosides and the ethyl acetate is composed of the aglycones. The ethanolic extract showed the cytotoxicity against the SKBR3 and MDA-MB435 breast cancer cell lines with the ED₅₀ values of 56.07 ± 3.77 and 30.61 ± 1.49 µg/ml, respectively. This inhibitory growth activity of the treated cells acted in a dose-dependent manner which was also confirmed by the cell viability with the trypan blue exclusion assay. Such observation demonstrated that some active



ANTICANCER EFFECT OF *SAPINDUS TRIFOLIATUS* ON HUMAN BREAST CANCER CELL LINES

components of this plant should be in the ethanolic fraction.

In Fig. 3A and 3B, SKBR3 cells treated with the herb extract for 48 h slightly decreased in the number of cells in S phase, whereas MDA-MB435 treated with the extract for 48 h remarkably accumulated in the G2/M phase of the cell cycle up to 45% as shown in Fig. 4A and B. The results indicated that the herb extract fraction 3 could suppress breast cancer cell lines proliferation especially MDA-MB435 via the cell cycle blockage.

Many anticancer agents from plants that have been prescribed for treating malignancies nowadays inhibit cancer cell growth through cell cycle regulation including the G2/M accumulation (Y. Tanaka *et al*, 2004). It is well known that agents affect the G2/M phase cell cycle arrest interact by targeting tubulin or disrupting the tubulin-microtubule equilibrium (P.B. Schiff *et al*, 1996) (Hadfield JA *et al* 2003). According to our results, *Sapindus trifoliatus* exhibited the antiproliferative effect on MDA-MB435 breast cancer cells via G2/M cell cycle arrest, thus it should interact with tubulin to the same extent as the plant-derived chemotherapeutic agents. However, the antiproliferative activities of this plant might be possibly dependent on cell types including the culture conditions.

In conclusion, *Sapindus trifoliatus* fraction 3 could inhibit the proliferation of human breast cancer cell lines, SKBR3 and MDA-MB435. Our results demonstrated that the cell cycle via G2/M blockage plays some roles in *Sapindus trifoliatus* induced antiproliferative activities in MDA-MB435. However, further chemical work and investigations at molecular level are required to identify the active components that could induce growth inhibition and

to establish the possible correlation among the mentioned activities of the herb extract.

ACKNOWLEDGEMENTS

We specially thank Professor Dr. P.k.Panda, H.O.D of the Department of Pharmaceutical Sciences for his valuable support. This work was supported by the grant from A.I.C.T.E, NewDelhi.

REFERENCES

1. Arulmozhi DK, Veeranjanyulu A, Bodhankar SL and Arora SK,(2005): Investigations of *Sapindus trifoliatus* in dopaminergic and serotonergic systems, putative antimigraine mechanisms, *Ind. J. of Pharmacol.*, 37: pp. 120- 125.
2. Arulmozhi DK, Sridhar N, Bodhankar SL, Veeranjany A & Arora SK, (2004), In vitro pharmacological investigation of *Sapindus trifoliatus* in various migraine targets. *J. Ethnopharmacol.*; 95: pp. 239-45.
3. Cameron D and Bell R, (2004), Optimizing treatment for patients with breast cancer, *Oncology*, 31, pp. 4–5.
4. Merkel DE and Mcguire WL, Ploidy, (1990), Proliferative activity and prognosis, *Cancer* 65, pp. 1194–1205.
5. Fargeot P, Bonnetterre J, Roche H, Lortholary A, Campone M, Praagh IV, Monnier A, Namer M, Schraub M &, Barats JC, (2004), Disease-free advantage of weekly Epirubicin plus Tamoxifen versus Tamoxifen alone as adjuvant treatment of operable, node-positive, elderly breast cancer patients: *Journal of Clinical Oncology* 22, pp. 4622–4630.



ANTICANCER EFFECT OF *SAPINDUS TRIFOLIATUS* ON HUMAN BREAST CANCER CELL LINES

6. Hadfield JA, Ducki S, Hirst N and McGown AT, (2003), Tubulin and microtubules as targets for anticancer drugs, *Progress in Cell Cycle Research* 5, 44, pp. 309–325.
7. Hardman JG, Limbird JE, Molinoff PB, Ruddon RW and Gillman AG, (1996): editors. Goodman & Gilman's The Pharmacological Basis of Therapeutics, 9th Ed. New York: Mc Graw Hill; pp. 461-86.
8. Hebert-Croteau N, Brisson J, Latreille J, Rivard M, Abdelaziz N and Martin G, (2004), Compliance with consensus recommendations for systemic therapy associated with improved survival of women with node-negative breast cancer, *Journal of Clinical Oncology* 22, pp. 3685–3693.
9. Lacroix M and Leclercq G, (2004), Relevance of breast cancer cell lines as models for breast Tumors: an update, *Breast Cancer Research Treatment* 83, pp. 249–289.
10. Martin N & Cheirsilpa A, (2003), *Breast*. Ministry of Public Health, Bangkok *Cancer* vol. 3, pp. 47–48.
11. P.B. Schiff, J. Fant and S.B. Horwiz, (1997), Promotion of microtubule assembly in-vitro by Taxol, *Nature* 277, pp. 655–657.
12. Rang HP, Dale MM and Ritter JM, (1999): editors. Pharmacology Edinburg: Churchill Livingstone; pp.
13. Rubinstein LV, Shoemaker RH, Paull KD, Simon RM, Tosini S, Skehan P, Scudiero DA, Monks A and Boyd MR, (1990), Comparison of in-vitro anticancer-drug-screening data generated with a tetrazolium assay versus a protein assay against a diverse panel of human tumor cell lines, *Journal of National Cancer Institute* 82, pp. 111–116.
14. Tanaka Y, Fujiwara K, Tanaka H, Meheta K and Kohno I, (2004), Paclitaxel inhibits expression of heat shock protein 27 in ovarian and uterine cancer cells, *International Journal of Gynaecological Cancer* 14, pp. 616–620.